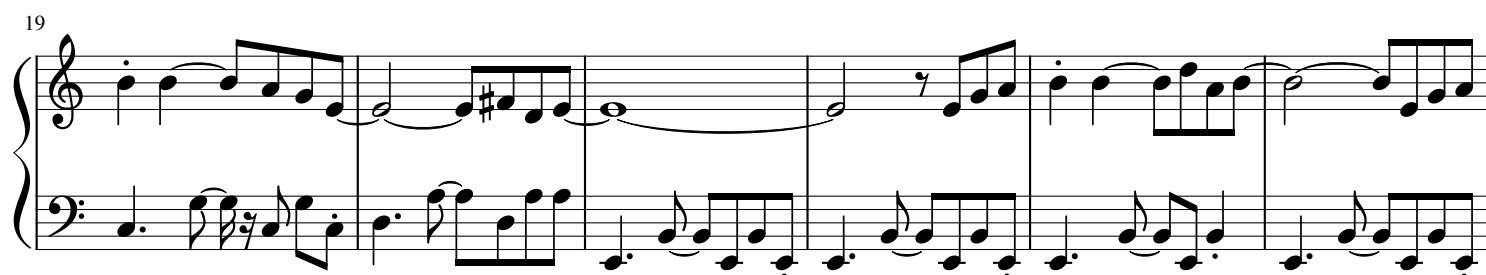
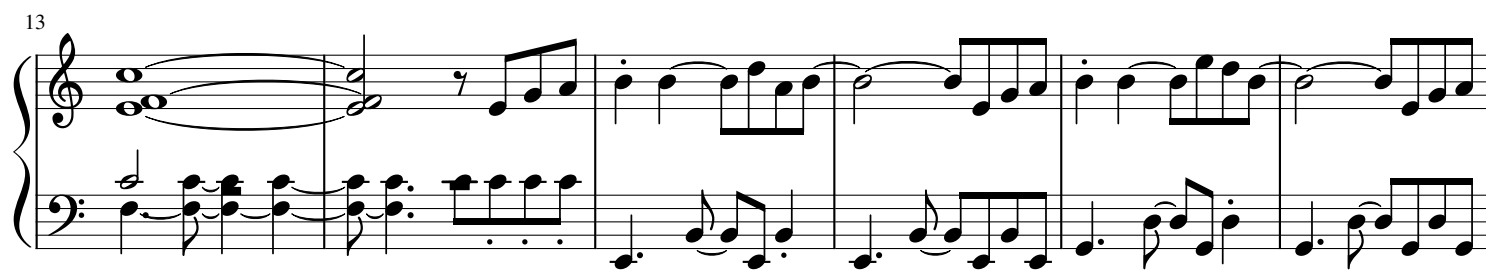
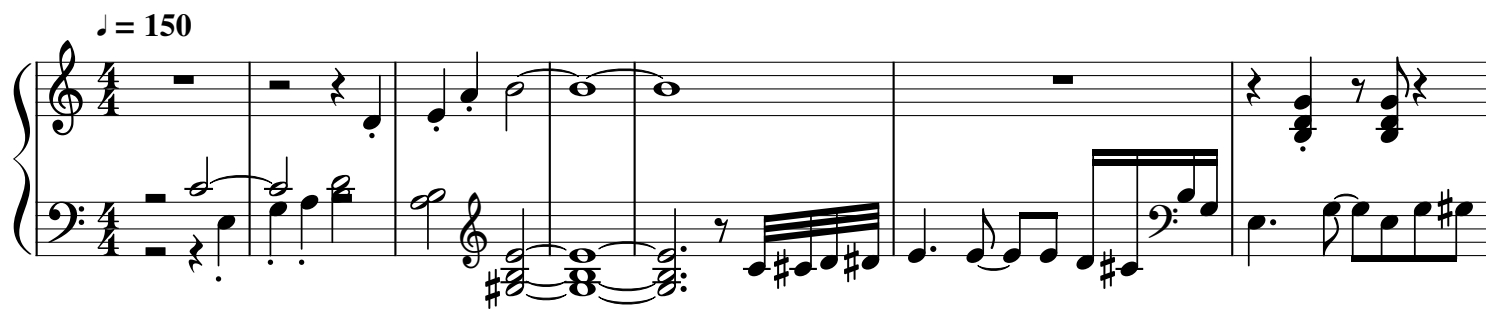


# Super Mario Odyssey - Steam Gardens (8-Bit)

Koji Kondo



31

37

43

49

55

59

Measures 59-61. The right hand plays a melody of eighth notes with a sharp sign on the third note of each measure. The left hand plays a bass line with chords and eighth notes.

62

Measures 62-65. The right hand features a complex melodic line with many beamed notes and a sharp sign. The left hand continues with a bass line of chords and eighth notes.

66

Measures 66-68. The right hand has a melodic line with beamed notes and a sharp sign. The left hand plays a bass line with chords and eighth notes.

69

Measures 69-73. The right hand plays a melodic line with a long note at the start and eighth notes. The left hand plays a bass line with chords and eighth notes.

74

Measures 74-78. The right hand plays a melodic line with eighth notes and a sharp sign. The left hand plays a bass line with eighth notes and chords.

80

86

92

98

104

110

115

118

122

125